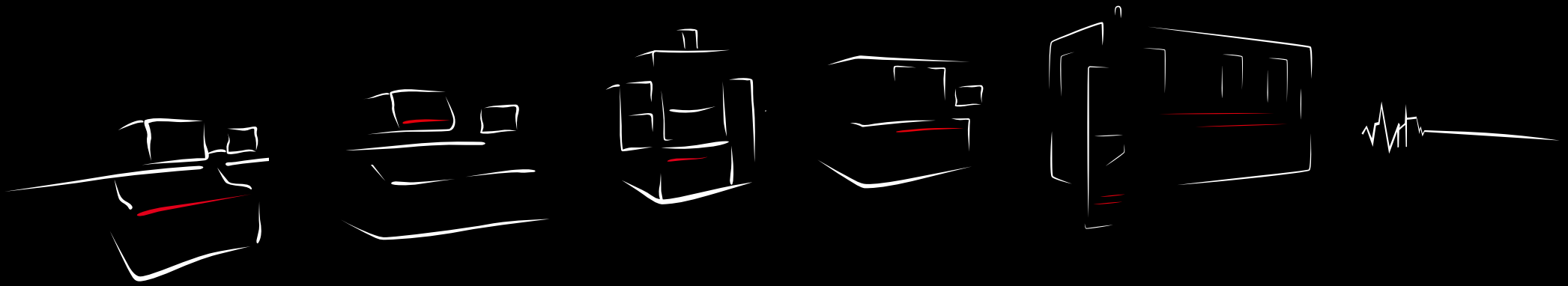


The Art of *Economy*





**If you've got grand designs,**  
you need someone strong you can count on



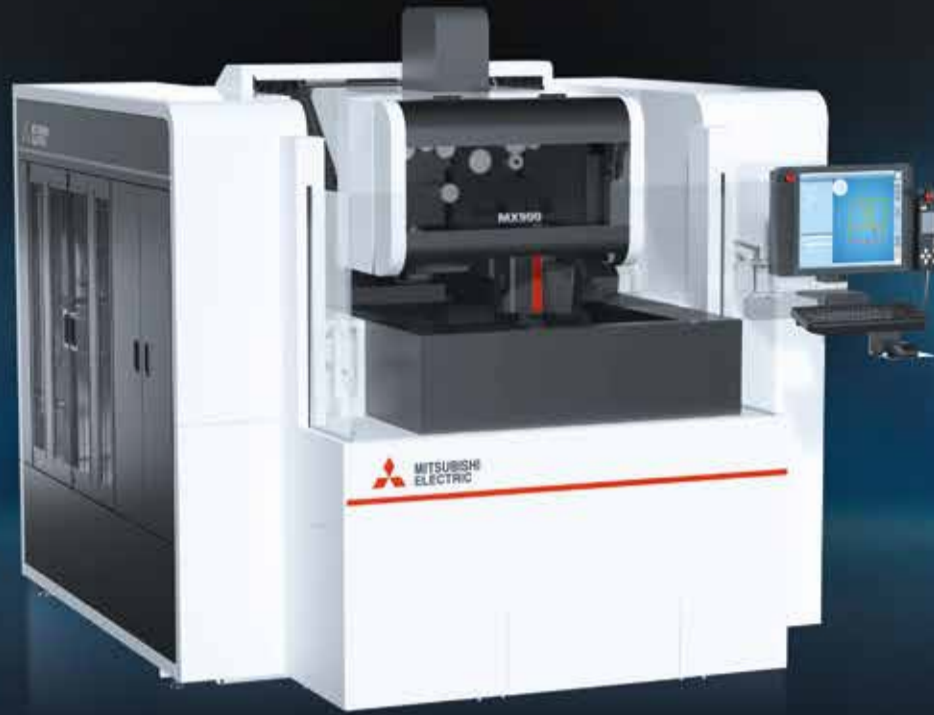
Since 1970, a growing number of European companies have been turning to the high-performance EDM machines of world market leader Mitsubishi Electric

Only by producing components in-house is it possible to tailor them perfectly to the intended task. Mitsubishi Electric resorts to its own controls, semiconductors, motors and other items, which are adapted in detail to all requirements. The only thing you notice is that it works – and often for many decades after purchase.

If you want to invest soundly in a durable EDM machine, choose **Mitsubishi Electric**.

## MX900 – Precision in Oil

The MX900 – everything from intricate clock components and tungsten carbide stamps for toolmaking to medical components and more: a machine system for pure precision, without any corrosion. Precision at the highest level with oil as the dielectric. Developed for a combination of extreme accuracy and superlative surface quality.



- User-friendly control system
- Wide range of technologies
- Heavy-duty machine construction
- As good as Ra 0.04 µm in tungsten carbide
- In steel < Ra 0.10 µm

MX900	
Travel XxYxZ in mm	300x300x120
Travel U/V in mm	(+/- 35)
Max. workpiece dims. WxDxH in mm	500x500x100
Max. workpiece weight in kg	300
Machine weight in kg	4,000
Surface finish up to (Ra) in µm	0.04
Positional accuracy in µm	< ±1
Geometrical accuracy	< ±1
Roundness	< 1



Visit website for more information:  
[qr.mitsubishielectric-edm.de/mx900\\_en](http://qr.mitsubishielectric-edm.de/mx900_en)



## MP Series – High Accuracy

MP Connect: technology for sophisticated toolmaking – single-source precision and ergonomics. Maximum accuracy for years to come thanks to the non-contact and hence wear-free Tubular Shaft Motor. The MP Series breaks new ground – active temperature control and special guides roll back the bounds of the feasible. Extreme precision that always impresses – basic accuracy +/- 2 µm, Ra < 0.1 µm.



Machine	MP1200 Connect	MP2400 Connect
Travel XxYxZ in mm	400x300x220	600x400x310
Travel U/V in mm	120x120 (+/- 60)	150x150 (+/- 75)
Max. workpiece dims. WxDxH in mm	810x700x215	1,050x820x305
Max. workpiece weight in kg	500	1,500
Machine weight in kg	2,700	3,800
Surface finish up to (Ra) in µm, standard version	0.08	0.08
Fine-finishing generator (SD-FS) fitted as standard, Ra in µm (carbide)	0.05	0.05



Visit website for more information:  
[qr.mitsubishielectric-edm.de/mp\\_en](http://qr.mitsubishielectric-edm.de/mp_en)



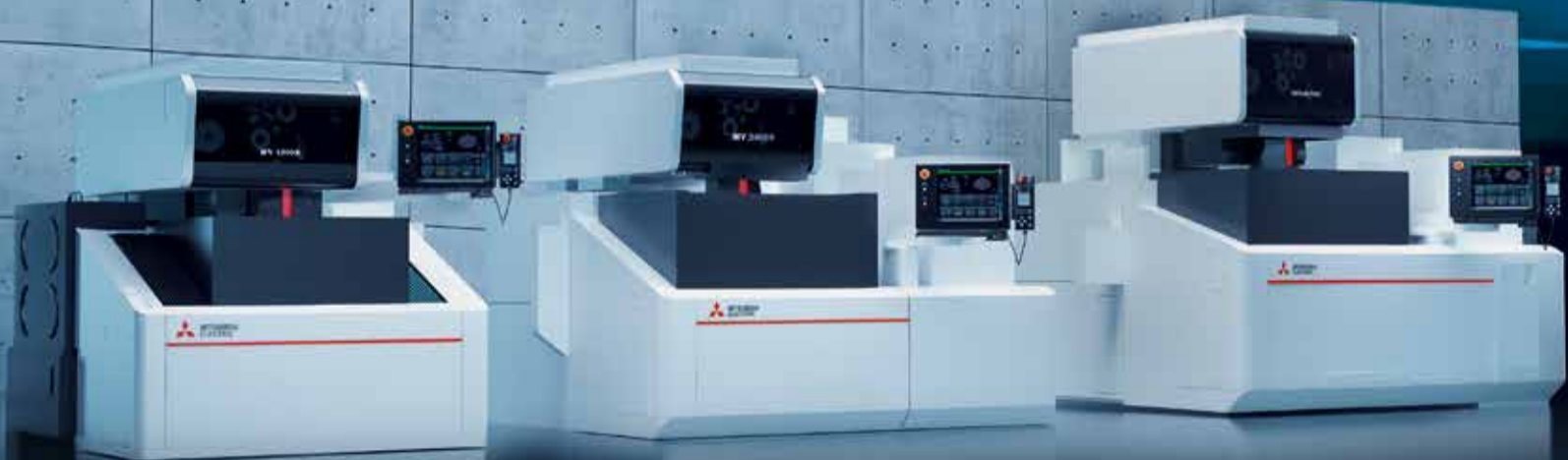
# MV-R Series – Power for Precision



Extra precision and speed thanks to the generator that not only thinks, but also thinks ahead. If you want to achieve better surface quality with fewer recuts, you need the right blend of mutually adapted technologies. With Precise Finish Circuit, you achieve more precise results faster. The results you expect – delivered in a stable, transparent, efficient and reliable process.



Visit website for more information:  
[qr.mitsubishiedm.de/mv\\_r\\_en](http://qr.mitsubishiedm.de/mv_r_en)



Machine	MV1200R Connect	MV2400R Connect	MV2400R Z+ Connect	MV4800R Connect
Travel XxYxZ in mm	400x300x220	600x400x310	600x400x425	800x600x310
Travel UxV in mm	120x120 (+/- 60)	150x150 (+/- 75)	150x150 (+/- 75)	150x150 (+/- 75)
Max. workpiece dims. WxDxH in mm	810x700x215	1,050x820x305	1,050x820x420	1,250x1,020x305
Max. workpiece weight in kg	500	1,500	1,500	3,000
Machine weight in kg	2,700	3,500	3,650	5,600
Surface finish up to (Ra) in µm	0.15	0.15	0.15	0.15

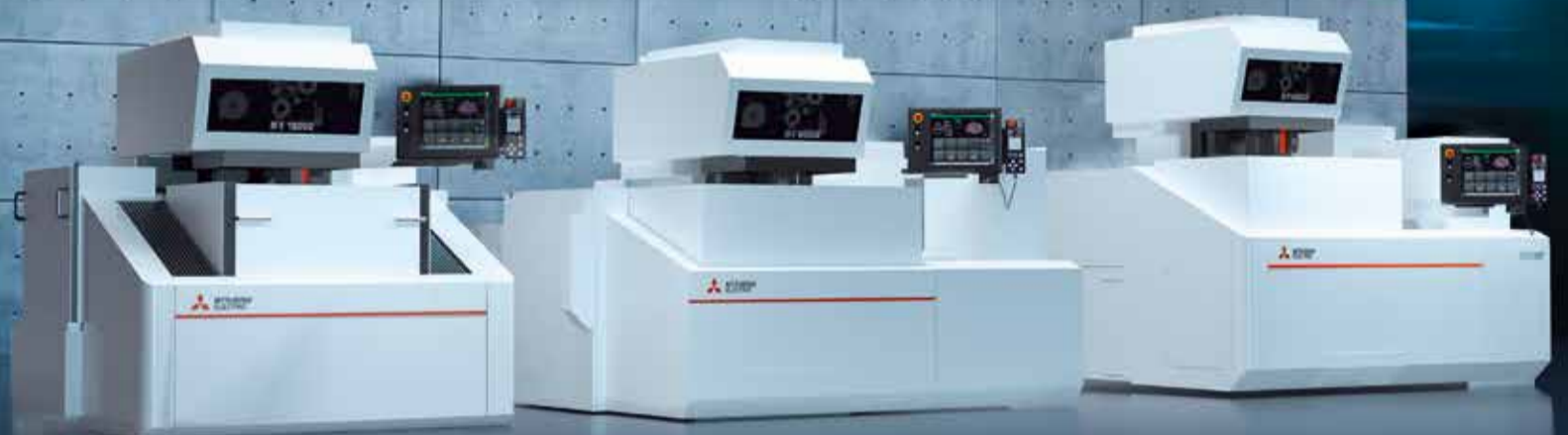
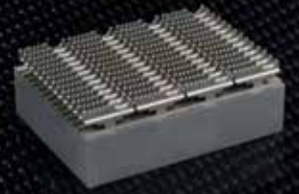
# MV-S Series – Power for Production



The perfect combination of performance and ergonomics. The MV-S Series significantly reduces costs for electricity, wire, and filters – for substantially greater cost efficiency. Designed for many years of operation, the machine stands out with intelligent technologies that keep maintenance requirements exceptionally low. Intuitive operation – makes getting started easy.



Visit website for more information:  
[qr.mitsubishielectric-edm.de/mv\\_s\\_en](http://qr.mitsubishielectric-edm.de/mv_s_en)



Machine	MV1200S NewGen	MV2400S NewGen	MV2400S Z+ NewGen	MV4800S NewGen	MV4800S Z+ NewGen
Travel XxYxZ in mm	400x300x220	600x400x310	600x400x425	800x600x510	800x600x810
Travel UxV in mm	120x120 (+/- 60)	150x150 (+/- 75)	150x150 (+/- 75)	200x200 (+/- 100)	200x200 (+/- 100)
Max. workpiece dimensions WxDxH in mm	810x700x215	1,050x820x305	1,050x820x420	1,250x1,020x505	1,250x1,020x805
Max. workpiece weight in kg	500	1,500	1,500	3,000	3,000
Machine weight in kg	2,700	3,500	3,650	5,700	6,730
Surface finish up to (Ra) in µm	0.30	0.30	0.30	0.30	0.30

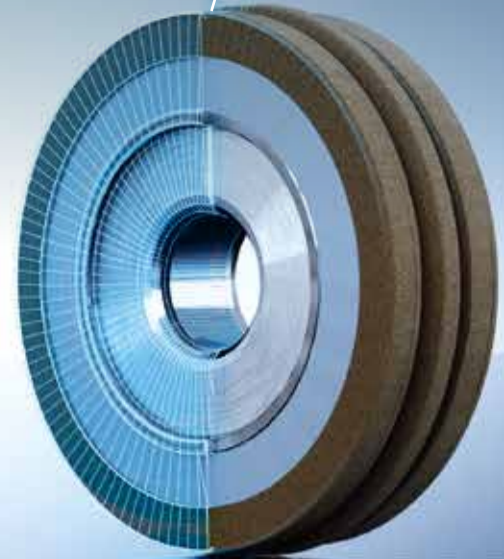
# EDM-DRESS – Wire EDM dressing of CBN and diamond grinding wheels



Reproducible dressing result

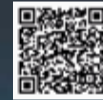


Complex geometries can be produced, hence fewer grinding wheels are needed in some cases



Intricate structures are easily produced – extension of the scope for grinding

**Up to 280% higher feed rates,  
400% longer tool life.**



Visit website for more information:  
[qr.mitsubishielectric-edm.de/edm\\_dress\\_en](http://qr.mitsubishielectric-edm.de/edm_dress_en)



Machine	EDM-DRESS 1200	EDM-DRESS 2400
Grinding wheel diameter in mm	up to 250	up to 450

- With EDM-dressed grinding wheels, you achieve reproducible precision – regardless of the operator.
- EDM-dressed grinding wheels deliver consistently high quality over a significantly longer service life.
- EDM dressing is an industrial process that can be digitally integrated – for future-proof manufacturing.
- Your production remains stable – regardless of personnel availability.



Through automation, you reduce downtime, lower inventory levels, and make your production more resilient to staffing shortages. The investment pays for itself in a short time and ensures robust process stability over the long term.

- With EDM-dressed grinding wheels, you achieve reproducible precision – regardless of the operator.
- EDM-dressed grinding wheels deliver consistently high quality over a significantly longer service life.
- EDM dressing is an industrial process that can be digitally integrated – for future-proof manufacturing.
- Wire-EDM dressing of grinding wheels for the finest and most complex geometries.

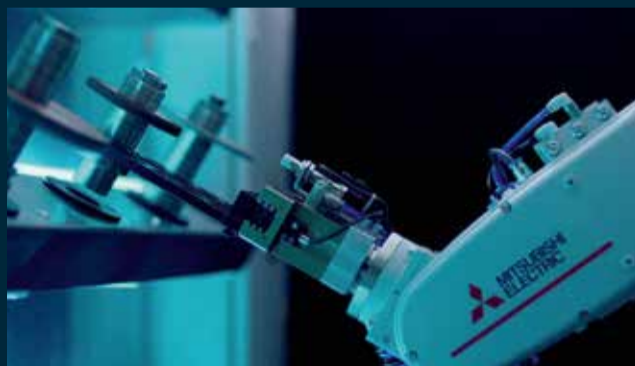
**DiamondCell**

Travel (X / Y / Z) in mm	400 / 300 / 220
Robot	Mitsubishi Electric MELFA RV20
Magazine	up to 32 positions
Cell-management Software	MasterCell 2.0

## Examples of use

Discover the many possibilities

**DiamondCell 1200**



DiamondCell as a single machine, automated with a handling robot and magazine in different configurations – the solution for total autonomy:

- Axis of rotation ITS-RSI-42/ -55/ -80
- Mitsubishi MELFA Robot with gripper
- 20/ 24/ 32-slot workpiece magazine
- Grinding wheels up to 12 kg
- Automatic Form F holder

**Unmanned and fully automated operation**



Automatically loaded wire EDM machine for profiling grinding wheels. Mitsubishi Electric provides the right expertise and all the required components from a single source, including the Mitsubishi MELFA robot. A robotic cell can profile different sets of grinding wheels unattended and in any sequence, delivering high productivity and exceptional cost efficiency.

**Inbuilt flexibility for a wide range of fields**

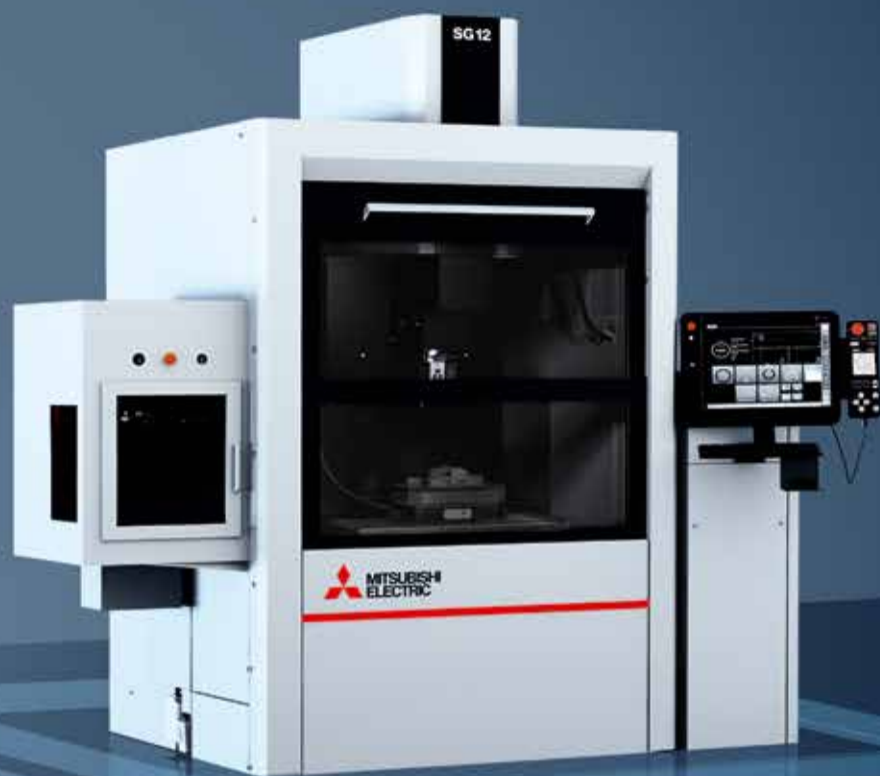


Featuring inbuilt flexibility, the production cell can be used in further configurations for a variety of components in need of erosion. Fully automated, unmanned and highly effective.

The master of materials – nano precision not only in tungsten carbide. Generator with nP Circuit: the nano-pulse fine finishing stage produces the most finely structured surface with rapid, fine sparks. Intuitive operation – makes getting started easy.



Visit website for more information:  
[qr.mitsubishielectric-edm.de/sg\\_r\\_en](http://qr.mitsubishielectric-edm.de/sg_r_en)

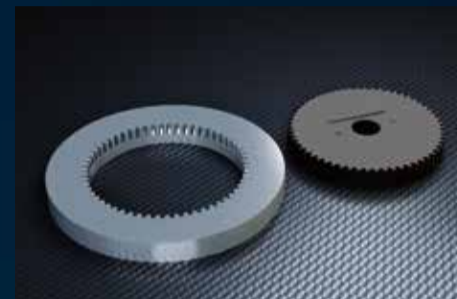
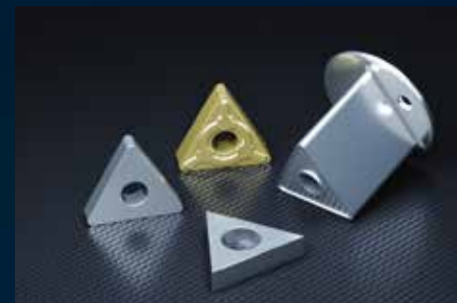
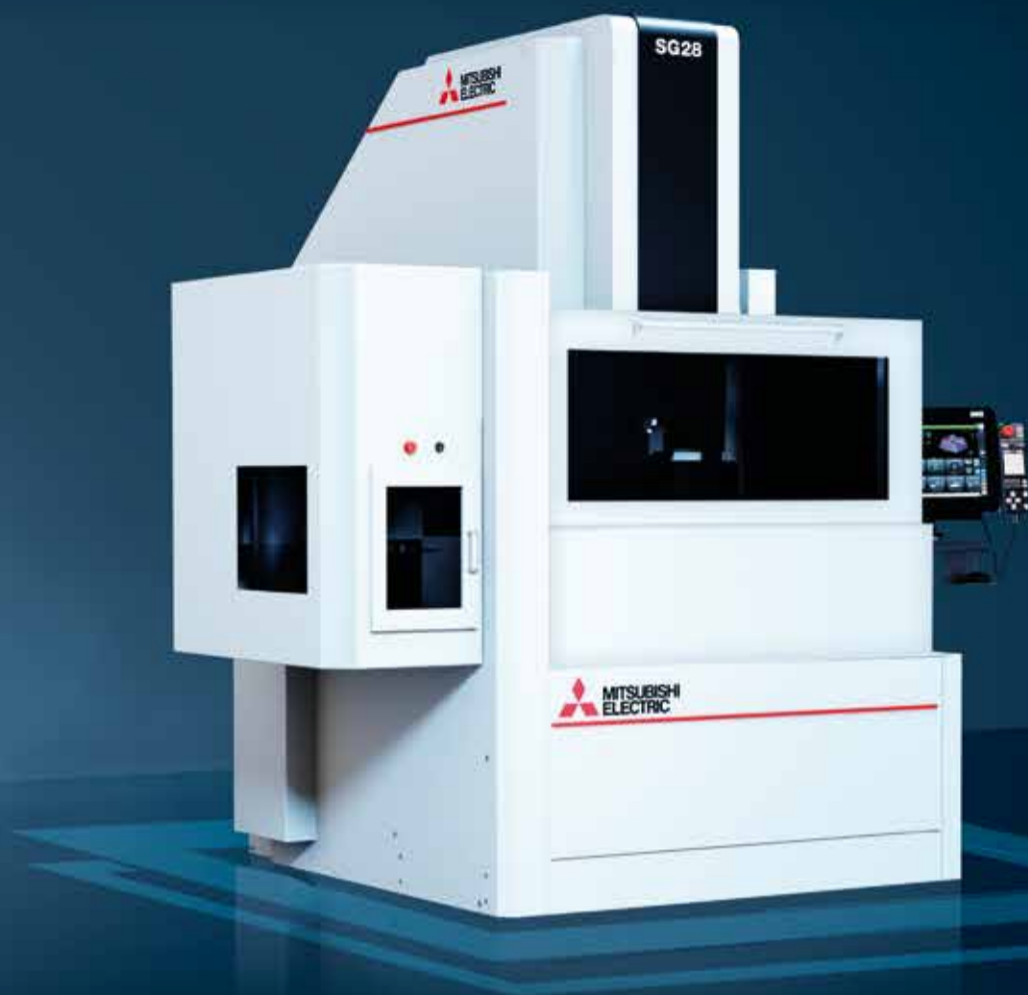


Machine	SG8R	SG12R	SG28R
Travel XxYxZ in mm	300x250x250	400x300x300	650x450x400
Max. workpiece dimensions WxDxH in mm	770x490x200	900x650x350	1,050x760x350
Max. workpiece weight in kg	550	1,000	2,000
Max. electrode weight in kg	25	50	50
Table dimensions WxD in mm	500x350	700x500	850x600
Daylight in mm	150–400	200–500	175–575
Machine weight in kg	2,000	3,500	5,800
Surface finish up to (Ra) in $\mu\text{m}$ (carbide / steel)	0.1	0.1	0.1

Compact, productive, precise. Equipped for every application. Achieve best results in steel, carbide, titanium and many more. Acceleration of up to 1.6 G and travel speeds of up to 20 m/min enabled by the modern drive unit of the Z axis.



Visit website for more information:  
[qr.mitsubishielectric-edm.de/sg\\_s\\_en](http://qr.mitsubishielectric-edm.de/sg_s_en)



Machine	SG8S	SG12S	SG28S
Travel XxYxZ in mm	300x250x250	400x300x300	650x450x400
Max. workpiece dims. WxDxH in mm	770x490x200	900x650x350	1,050x760x350
Max. workpiece weight in kg	550	1,000	2,000
Max. electrode weight in kg	25	50	50
Table dimensions WxD in mm	500x350	700x500	850x600
Daylight in mm	150–400	200–500	175–575
Machine weight in kg	2,000	3,500	5,800
Surface finish up to (Ra) in µm (steel)	0.1	0.1	0.1

# EDMCELL CUBE

EDMCell Cube doesn't just automate your production — it revolutionizes how you think about manufacturing. Run complex operations 24/7 with precision that never varies and profitability that never stops growing. EDMCell Cube handles the heavy lifting. You handle the strategy.



Visit website for more information:  
[qr.mitsubishielectric-edm.de/edmcube\\_en](http://qr.mitsubishielectric-edm.de/edmcube_en)



## Tailor-made automation

Flexible into the future

Handling systems and robots from various manufacturers can be integrated seamlessly. Mitsubishi Electric's EDM systems stand for high reliability and productivity and are ideally designed for automated processes. We show you proven practical solutions that help reduce costs and increase your production capacity.

Inbuilt flexibility for a wide range of fields



Electrode and Workpiece Handling for Diesinking EDMs



Manufacturing parts on a wire EDM, with automation and fixtures for maximum profitability.



## EDM drilling

Three sizes, one strategy. Drilling technologies for all requirements. Whatever is required – through holes or blind holes, small or large diameters, in steel or in other materials – the user has a multitude of EDM technologies at their disposal. A monument to precision.



Machine	SD22AS	SD4030AS CNC	SD6040AS CNC with AEC Device
Travel XxYxZ (W) in mm	300x200(5-305)	400x300 (15-370)	600x400 (15-360)
Machine dimensions WxDxH in mm	1,450x1,350x2,200	1,600x1,650x2,200	1,600x1,750x2,200
Max. workpiece dims. WxDxH in mm	680x500x300	850x500x370	850x500x360
Max. workpiece weight in kg	250	500	500
Table dimensions WxD in mm	450x210	450x390	625x420

The button that can program...  
program really well...  
on any wire EDM system!



Even I, as a sales manager, can suddenly program ...

Hans-Jürgen Pelzers  
Sales Manager at  
Mitsubishi Electric EDM



To the video!  
[www.mitsubishielectric-edm.eu/xedm](http://www.mitsubishielectric-edm.eu/xedm)

## XEDM

Automatic programming from 3D data included

### Programming without training



XEDM on the machine control or XpressCAM on the PC - both allow intuitive programming based on 3D data. Lengthy training is eliminated thanks to the revolutionarily simple concept - up to fully automatic NC programming based on clean design data.



Read more...  
[qr.mitsubishielectric-edm.de/me\\_xedm\\_en](http://qr.mitsubishielectric-edm.de/me_xedm_en)

### XEDM on the machine control



3D programming at the machine? Why not - when you need flexibility and speed. Of course it works! I can simply define the cutting sequence myself, influence the separation of scrap parts, change other parameters. I can do it, but I don't have to! Because XEDM is intelligent and automatically suggests the optimal strategies and settings.

### The team XEDM and XpressCAM



XpressCAM - the extended version of XEDM for PC shares the same base data with XEDM, and can additionally process 2D data in DXF format. On the machine, any program can be modified using XEDM. This also makes machine changeover simple. One click is enough: the machine recognizes when a program is not intended for it and adapts it accordingly. That's intelligent!



**The quickest service ever...  
Expert support via smartphone  
mcAnywhere Live**



Experience how it works  
[qr.mitsubishielectric-edm.de/mcanywhere\\_live\\_en](http://qr.mitsubishielectric-edm.de/mcanywhere_live_en)

## After Sales and Training

Best care for you and your machines with Mitsubishi Electric.

mcAnywhere - always at hand



You can control the machine and keep an eye on processes, wherever you are. Intelligent communication takes the pressure out of work. Ideal when combined with automation solutions and high process autonomy with the intelligent AT wire threader.

Support when you need it



With strong support from Mitsubishi Electric across all channels—by phone, through on-site service, and online via mcAnywhere Live—your machine runs exactly as you need it, precisely according to plan.

Courses, seminars and user workshops



Our wide range of training programs covers everything from basic knowledge to customised courses tailored precisely to the training needs of your employees. In addition, we regularly offer free application workshops for our customers, covering current topics in both theory and practice.

Spare Parts and Consumables –  
directly from Mitsubishi Electric

## Mitsubishi Electric genuine parts

Available for all your needs

All products in the Consumables Line in genuine Mitsubishi Electric quality. Delivered directly by Mitsubishi Electric Europe. Top quality at fair prices – for your safety and productivity.

Original spare parts from Mitsubishi Electric



The perfect match for every job



Order conveniently online – directly from the manufacturer



Visit our online shop  
[www.edmshop.de](http://www.edmshop.de)

Partners



Find out what's new first



[mitsubishielectric-edm.eu/yt](https://mitsubishielectric-edm.eu/yt)



[mitsubishielectric-edm.eu/ig](https://mitsubishielectric-edm.eu/ig)



[mitsubishielectric-edm.eu/li](https://mitsubishielectric-edm.eu/li)

**MITSUBISHI ELECTRIC EUROPE B.V.**

Mechatronics Machinery / Mitsubishi-Electric-Platz 1 / 40882 Ratingen / Germany / Tel. +49 (0) 2102 486-6120 / Fax +49 (0) 2102 486-7090  
edm.sales@mee.com / [www.mitsubishielectric-edm.eu](http://www.mitsubishielectric-edm.eu)



EN Subject to technical changes and errors / 24.04.2026  
Details of image rights, trademark rights and other legal notices at [www.mitsubishielectric-edm.de/notices](http://www.mitsubishielectric-edm.de/notices)